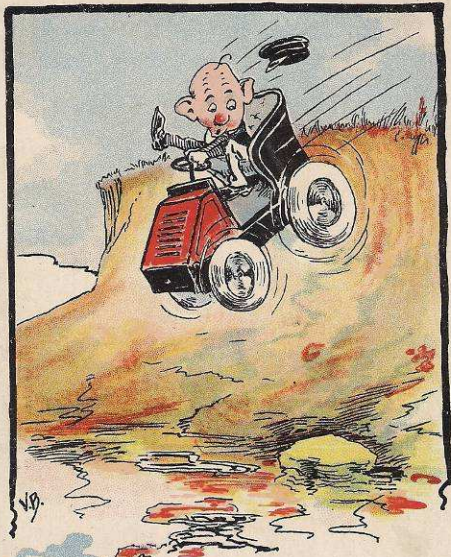
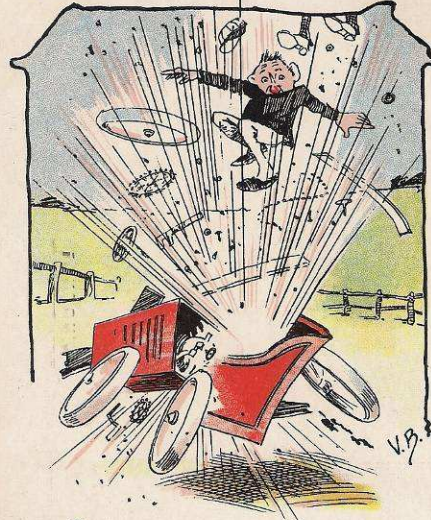


VICTOR BEVERIDGE

1900's



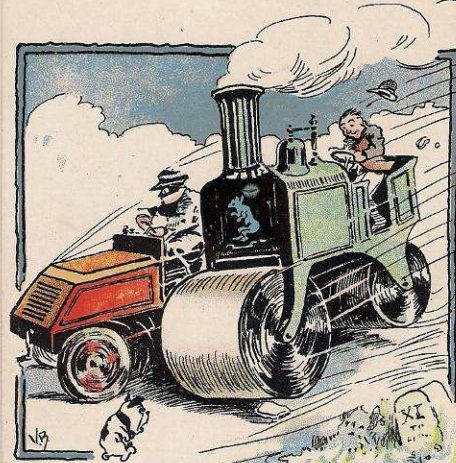
I think I will drop in



*I'm going up
Country to night (Friday)
Shopsure*



It is Time



Should I arrive before you

Victor Beveridge was one of the early postcard artists producing the artwork for at least two series of motoring cards.



The cards illustrated are all about 1905: one set is very cartoonish (signed VB), but the others where he signs his full name seem better drawn (as regards motoring detail). He seems to have been involved in the commercial drawing world, as he was supplying artwork for 'The Advertising World' magazine (Ewart Seymour & Co) in 1904. This was described in an auction catalogue as "a strong evocation of the best of Edwardian advertising work".

There is reference to a Victor Beveridge as a journalist for The Motor magazine who died in 1945. He wrote under the pen name of 'Corporal Victor'. Whether the journalist and artist are the same person is not known.

Grateful thanks to John Place for the supply of images and information.